

The New York Musical Theatre Festival and Kelly Izzo Present



A New Rock Musical

by Kelly Izzo

## About the Play

Alice Unraveled began as a labor of love. It is based on the story of a dear friend of mine who was the victim of sexual assault. I have watched her constant struggle with post traumatic stress disorder (PTSD) and depression and wanted to give her and the countless other victims of sexual assault, a voice.

The structure of the play mirrors the repetitive cycle of a PTSD nightmare. Audience of past productions have called it avante garde and expressionistic in style. But as a playwright, I'm sincerely trying to express reality and the truth one learns from dreams.

Those suffering from PTSD are trapped in a hellish vision where the landscape is familiar but constantly shifting and morphing into something overwhelming. By using other aspects of theatre like dance and circus and the archetype of Alice in wonderland, I've tried to recreate this experience as opposed to focusing on a linear plot.

I hope the play brings attention to the problem of sexual assault in our culture. Also I hope it shows how the daily cruelties that for most of us seem minor or meaningless are magnified for those around us who have suffered trauma. Therefore, I believe it is imperative that we live kindly and compassionately.

### *How it all began*

Alice Unraveled began in 2009 as project for the Brockport High School Drama Club. I was a sophomore in college at the time but had been very active in theatre while I was in high school doing everything from performing, to painting sets, make up and tech crew. I have always loved the community of creativity in the theatre. So when the drama club asked me if I would be willing to write them a musical for their show in May 2010, I was honored and excited to take on the challenge. I had no idea that Alice Unraveled would become such an important part of my life.

I struggled a lot through college with mysterious health issues that I later discovered were caused by serious food intolerances. I was constantly sick and lost a lot of weight. My the middle of my sophomore year I was on the edge of starvation at 5' 2" and 73 lbs. Working on Alice Unraveled was one of the only things that kept me pushing forward. It was a chance to escape my own aches and pains and enter into Alice's world. It gave me focus and direction when I was stuck in my own Wonderland feeling lost, confused and misdirected. Seeing Alice Unraveled in a workshopped production at Brockport was an incredible feeling.

In my senior year of college I produced a second performance of Alice Unraveled. I enlisted the help of a very talented friend of mine, Michael Hart, to work on the arrangements, and the second showing of Alice Unraveled was produced with full orchestration in 2012. Since then the script has continued to grow and develop. Songs and scenes have been added and changed. It has really taken on a life of its own. I am incredibly excited to showcase the revised script at this year's New York Musical Theatre Festival!

-Kelly Izzo

## Synopsis

Alice Unraveled is the story of an adolescent girl struggling with post-traumatic stress. The piece follows Alice as she struggles to cope with the trauma of a sexual assault. Her experiences become tangled in her mind, her life nightmarish. In Act I she revisits the memory of her father leaving and her daily conflicts with her mother. As a young girl named Alice, she has grown up fascinated by Lewis Carroll's works, and these characters become the metaphors by which she struggles to understand her experience. Her troubled life in school leads her "down the rabbit hole." The daily pressures and thoughtless acts of those around her are magnified by her trauma. Memories revisit Alice and become twisted and changed; a fun house mirror reflection of a disturbed mind that blends reality with fantasy, a mind that circles back to childhood to find some way of making sense of cruel senselessness. Each day she relives the experiences that lead up to and include the assault.

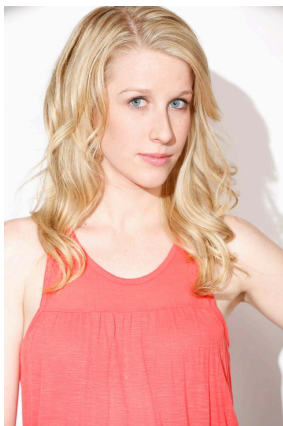
In Act II she descends into a "Wonderland" of madness where she must discover her identity apart from the distortions created by her trauma. She sees herself and those around her as characters in a mad fantasy, a world of chaos and nastiness. It isn't until she is confronted and forced to defend herself that she finds the inner conviction and self-awareness to move forward and begin to make herself whole again.

## Director's Note

~*David A. Miller*

It is a special gift to take an active role in the development of a new performance piece. When I first read and listened to Alice Unraveled, it was clear to me that this piece and Kelly's work was something special and full of potential. I knew that I wanted to take part. And I loved the opportunity that NYMF was to provide: a chance to involve you, the audience, as a contributor to the process. We can only ever fully understand a performance piece when it is in performance. And what's a performance without an audience? I am thrilled to discover as much as we can about this shared, unique experience of falling down the rabbit hole together through Alice Unraveled.

## Meet the Cast



**Kelsey Burd (Caterpillar 2/ Dormouse)** is a Mid-western girl who has recently taken on NYC. Kelsey studied musical theatre performance at Illinois State University where she was seen as Evita in *Evita* and received the KCACTF Irene Ryan Nomination for her performance. Her favorite roles throughout the Midwest include Sharpay Evans in *Disney's High School Musical*, Holly in *The Wedding Singer*, Kerri Kowalski in *The Awesome 80's Prom* and Penny Pingleton in *Hairspray*. Kelsey has had the privilege to perform the works of new composers throughout the city and appeared as Chelsea White in the reading of Drew Overcash's new musical *Boys vs. Girls* this spring. She feels incredibly blessed and grateful for her amazing family,

friends, Dr. Chris Hollingsworth, and her Wellpath family! [www.kelseymburd.com](http://www.kelseymburd.com)

**Tyler Coughlin (Chorus/ Herald/** happily makes his NYC debut. His include: Geva Theatre Center's *A* Westchester Broadway Center's *Big* Performing Arts Center's *The* also a writer, comedian and student Theatre. He would like to extend his



**Stage Directions)** regional theater credits *Christmas Carol*, *River*, and White Plains *Laramie Project*. He is at The People's Improv thanks and love to K.I.



**Kally Duling (Mock Turtle)** is originally from Lincoln, Nebraska and thrilled to be a part of NYMF and *Alice Unraveled*! Some of her favorite credits include: Shirley Talley in *The Fifth of July* (Williamstown Theater Festival and The Bay Street Theatre), Elma Duckworth in *Bus Stop* (Fulton Theatre), Amy in *Little Women; the musical* (John Engeman Theatre), Lourve in *The Short Fall* (Toy Box Theatre Company), Sally in *You're a Good Man Charlie Brown* (Sage Theatre) and Michael in *Peter Pan* (Weathervane Theatre). Love and thanks to her family, Creative Talent, and Kenny!

**Monica Mary Hanofee (Caterpillar 3)** is thrilled to be performing with the cast of *Alice Unraveled* in the New York Musical Theatre proud to be a part of a community that work of artists! Monica grew up in Massachusetts and received her BA in Dance from Muhlenberg College in She also had the opportunity to study at College of the University of London. Monica's include *Sally Brown* in *You're a Good Man Charlie Zanna Don't*, and *Madeline* in Artspower's *Madeline and the Bad Hat*. Here in New York, performed at the Duplex in *Don't Tell Mama* and her debut at 54 Below. She is a member of AEA studies at the Jen Waldman Studio. Monica would family and friends for their love and support!! [www.monicamaryhanofee.com](http://www.monicamaryhanofee.com)



Festival. She is supports the new Wilbraham, Theatre and Allentown, PA. Goldsmith's favorite past roles *Brown*, *Kate* in National Tour of Monica has looks forward to and currently like to thank her



**Danielle Izzo (Alice)** is extremely pleased to be a part of this production of *Alice Unraveled*. She originated the role of Alice in 2010 and then performed it again at SUNY Purchase in 2012. She is currently a student at the State University of New York at Fredonia pursuing BFA degrees in both Acting and Dance performance. This past year she played the role of Evie in *Stop the World-I Want to Get Off* at the Bartlett Theatre. She was also selected to perform as a member of *The Alliance*, choreographed by Jon Lehrer, the founder and Artistic Director of LehrerDance. In the fall she will be starting off her senior year by performing in the *Fugitive Song Cycle* produced by Fredonia's Performing Arts Company.



**Jordy Lievers (Caterpillar 1)**

Selected regional theater credits are *Boeing Boeing* (Gloria), *The Donkey Show* (Titania), *Cabaret* starring



Amanda Palmer (Helga), *Alice vs. Wonderland* (Queen of Hearts, national & international premiers). Workshops/readings include *Once*, *Neurosis the Musical*. She can be seen on the Web in the upcoming *Twenty Five*, created by Josh Duboff. In September, Jordy will originate the role of Val Wondrous in the reconceived *Pal Joey* at Arkansas Repertory Theatre, directed by Peter Schnieder. She has a B.A. in English & Art History, Columbia University and an M.F.A. in Acting from the American Repertory Theater/Moscow Art Theater School Institute at Harvard. [www.jordylievers.com](http://www.jordylievers.com)



**Jay Paranada (White Rabbit)** makes his NYMF debut with *Alice Unraveled*! He has just returned from his second season with TWUSA as Alfredo Buzzito in *Skippyjon Jones*, having spent last season as Mudge in *Henry and Mudge*. Off B'way credits include *New Hopeville Comics* (Araca Group), *Odyssey* (Araca Group), *The Bully* (Bleecker Street). Other NYC roles include Nicely, Nicely in *Guys & Dolls* (Genesis Rep), Bun Foo in *Thoroughly Modern Millie* (Gallery Players), Peter in *Peter & The Wolf* (MCT), *In the Schoolyard* (Dramatists Guild), *Taste of Chocolate* (MITF), *Ocean in a Teacup* (MITF), *Divapalooza* (Laurie Beechman). In regional theatre Jay has played Chip in *Putnam County Spelling Bee* (CST; IRT; NENA), Engineer in *Miss Saigon* (CST; Count Basie), Sammy Fong in *Flower Drum Song* (TMP), *Junie*

*B. Jones* (Nat'l tour). He holds a BA in Sociology (PLU; University of York, UK). For my mahal, Scott, and family for whom I sing! Proud AEA. [jayparanada.com](http://jayparanada.com)

**Justin Robinson (March Hare)** is so happy to be making his NYC debut as a part of *Alice Unraveled* in the New York Musical Theatre Festival! Regional: *Altar Boyz* (Swing) – Merry-Go-Round Playhouse, *Hairspray* (Link Larkin) – Seacoast Rep, *Hairspray* (Brad) – Reagle Music Theatre, *The Rat Pack Lounge* (Vic) – PEG, *Les Miserables* (Feuilly) – New Bedford Festival Theatre. BA Rhode Island College. Tons of thanks to Mom, Dad, (Mom #2) Nicolle, (my favorite girls) Brenia and Olivia, Grammy, and (my hero) Chuck. Also, thanks to the whole *Alice Unraveled* team for the awesome opportunity. And last, a very special “thank you” to Grampy: You said to get out there and break a leg. Well, I’m getting there!!





**Evan Ruggiero (Mad Hatter)** is a senior at Montclair State University, where he is earning his B.F.A. in Musical Theatre. Previous credits include: *The Wild Party*(Burrs), *Crazy For You*(ensemble), *See What I Wanna See* (Morito, Husband, CPA), *Children's Resources Foundation Miami Industrial* (Dancer), *A Man of No Importance*(ensemble), *Sweet Charity* (Herman), and *Rags*(Bronstein). Film/Television credits include: *Tap World* (film), *Do Great Campaign*, and *American Idol Season 12*. Evan is a current member of the New Jersey Tap Ensemble and was seen performing in last summers tap festivals as a soloist in St. Louis, MO, Los Angeles, CA, and Bloomfield, NJ.

**Jenn Susi (Mother/Queen)** is thrilled to be a part of the *Alice Unraveled* cast! Some favorite roles over the years have been Satin from *Biblical Bitches* (The Kraine Theatre, NYC), Maureen from *RENT* (Non-Equity Tour), and most recently Siobhan from *Mythos: The Crimson Chorus* (Toronto). She will soon appear as the Host of *Matt Ward's Past, Present, and Future on YouTube*. Jenn earned a B.F.A in Theatre from Adelphi University and a MSED in Education/Theatre Education from Lehman College. Thanks to the Creative Team of *Alice Unraveled* for this amazing opportunity! Much thanks and love to all my Bronx family and friends for their unwavering support!



**Jordan Wolfe (Cheshire Cat)** NYMF debut! New York/Off-Broadway: New York Classical Theatre, Prospect Productions, The Here Theatre, and ...*UNAUTHORIZED Children's Scientology Pageant* (written and directed by Alex Timbers). Regional theatre credits include *All Shook Up* (Dean), *She Loves Me* (Arpad), *A Funny Thing Happened on the Way to the Forum* (Hero), *Dracula* (Jonathan Harker - world premiere). Jordan has also appeared on *Law & Order: CI*. Love and thanks to the entire *Alice Unraveled* team, and an always supportive family.

## Production Team

**Kelly Izzo (Book, Music and Lyrics)** is excited to be working with such a talented cast and crew. Kelly recently graduated Summa Cum Laude from the music conservatory at SUNY Purchase. She has committed herself to writing at least one song everyday for the last 5 years and now has written over 2,000 songs. *Alice Unraveled* is Kelly's first musical. She is currently working on two other shows, one of which she developed at the CAP 21 Writer's Residency last January (2013). Kelly Izzo is a Woody Guthrie Songwriting Contest winner (2009) and was named ultimate guitar's Unsigned Artist of the Month in November of 2008. She has also won several Ourstage.com songwriting competitions. Kelly released her first CD *Under the Lens* in 2008 and released her second CD *Bad Shark* last summer. Both CDs are available at [www.kellyizzo.com](http://www.kellyizzo.com).

**Adam Kaufman (Music Director)** is thrilled to be working on *Alice Unraveled*! Currently, Adam is the Associate Musical Director for *Piece Of My Heart* which will be playing Off-Broadway at New

World Stages this fall. Most recently, Adam has been musically assisting *The Last Five Years* movie starring Jeremy Jordan and Anna Kendrick, and the Broadway bound musical *The Last Ship* featuring music & lyrics by Sting. As a keyboardist, Adam played in both the original Broadway and Goodspeed productions of *13 The Musical*. As an orchestrator, Adam's recent credits include the 2013 *BCEFA Broadway Easter Bonnet* at the Minskoff theatre and his contributions to the *From Broadway With Love*, the Sandy Hook benefit concert. Adam also co-orchestrated *Foreverman The Musical*, for which he received the NYMF Outstanding Orchestration award in 2012. Special thanks to David A. Miller, Kelly Izzo & James McElwaine!

**David A. Miller (Director)** is a fan of and frequent collaborator with new work as a director, playwright, educator and as Artistic Director of The Artful Conspirators. This summer David will also direct *In the Early Dark*, a new play and finalist in the Samuel French OOB Festival. He recently workshopped his new play, *Sisters of the Eternal Knot*, featuring fighting medieval nuns with The Artful Conspirators. David is a resident director with Amphibian Stage Productions (Fort Worth, TX) and teaches at Bloomsburg University (PA) where he teaches acting, directing and playwriting. This season he will direct *Avenue Q* and *The Children's Hour* at Bloomsburg. MFA Directing, Mason Gross School of the Arts at Rutgers University. Drama League Directors Project Alum. [www.mrdavidamiller.com](http://www.mrdavidamiller.com)

**Lisa Tinglum (Stage Manager)** is thrilled to be a part of the awesome *Alice Unraveled* crew for her first time at the New York Musical Theater Festival! Lisa is a recent graduate of Wagner College (Cum Laude- 2013). While Lisa has enjoyed many positions in the theater world, her main passion is directing. Some of her favorite credits include *John & Jen* (Left Eye Productions), *The Vagina Monologues* (Wagner College- CSP), *The School for Lies* (Wagner College Theater), and *4.48 Psychosis* (Wagner College- CSP). Thanks to the cast and crew of *Alice Unraveled* and a special thanks to Dad, who believes I can do even the impossible.

## For more information visit:

<http://www.nymf.org/tickets/2013-events/alice-unraveled/>

<http://aliceunraveled.bandcamp.com/>

[www.kellyizzo.com](http://www.kellyizzo.com)



## About NYMF:

The New York Musical Theatre Festival (NYMF) exists to revitalize musical theatre culture by discovering and promoting new musical theatre artists, producers and projects; nurturing a vibrant and innovative artistic community; and connecting one of America's greatest art forms with a diverse, contemporary audience.

Now in its tenth year, the Festival is the largest musical theatre event in America. The preeminent site for launching new musicals and discovering new talent, the Festival provides an affordable platform for artists to mount professional productions that reach their peers, industry leaders, and musical theater fans. More than 85 festival shows have gone on to productions on and off-Broadway, in 48 states, and more than 20 countries worldwide, and Festival alumni have received a wide array of awards including the Tony and the Pulitzer Prize. In 2013, NYMF received a special Drama Desk Award in recognition of its work "creating and nurturing new musical theater, ensuring the future of this essential art form."

NYMF is the flagship program of National Music Theater Network, Inc., a 501(c) (3) not-for-profit organization. NYMF 2013 is presented in association with Dunkin' Donuts, [BroadwayWorld.com](http://BroadwayWorld.com), Production Resource Group, [TheaterMania.com](http://TheaterMania.com), New World Stages, Fox 5 New York, Tilson Consulting, The Out NYC, King Displays, Times Square Squared, Thomson Reuters, Nasdaq OMX, Backstage, Next Magazine, Ironpaper, [BroadwayInsider.com](http://BroadwayInsider.com), [TheMenEvent.com](http://TheMenEvent.com), and Yelp. NYMF is supported, in part, by an award from the National Endowment for the Arts, and by public funds from the New York City Department of Cultural Affairs, and from the New York State Council on the Arts, a state agency. Major supporters include The ASCAP Foundation, BMI Foundation, Inc., The BWF Foundation, Con Edison, The Nathan Cummings Foundation with the support and encouragement of Jamie Mayer Phinney, The New Musical Development Foundation, The Jerome Robbins Foundation, The Rodgers & Hammerstein Foundation, The Shubert Foundation, and The Theater League.

NYMF Memberships, which combine charitable contributions with valuable, flexible ticket packages and perks like early seating are currently on sale. To purchase memberships or single tickets for Festival events, call [\(212\) 352-3101](tel:2123523101) or visit [www.nymf.org](http://www.nymf.org).

For more information, please visit: [www.nymf.org](http://www.nymf.org)

